

TEST OUTLINE

- ① Identify one and two variable data
  - chart (table)
  - words
  - graph.

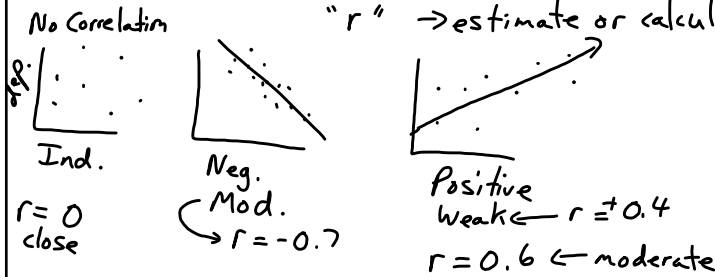
p.133

"Is there one or two things being measured?"

- ② Identify the variables
  - which is independent or dependent
  - in words, chart, graph

p.133

- ③ SCATTER PLOTS → p.142
  - create graph
  - line of best fit (equation) - estimate
  - Correlation
    - describe
      - positive / negative / no correlation
      - strong, moderate or weak
    - correlation coefficient
      - "r" → estimate or calculate

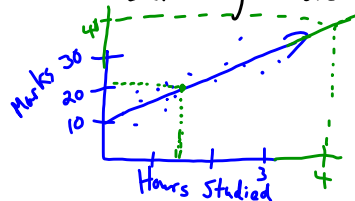


p.158 H.W.

\* May use graphing calculator but you don't have to.

Key words

- linear
- Non-linear
- interpolation } estimating → inside given data
- extrapolation } → outside given data
- estimate
- Outliers (x,y)
- correlation



① Graphing Calc. Assign  
(Blue Sheet)

② H.W. p. 133 #1, 2, 3, 5, 8

→ p. 142 #1, 2, 3, 6, 7, 8, 11, 12, 16

→ MSIP p. 158 All

EXCEL + FATHOM → MSIP  
(Comp)

④\* Review 2% p. 186

#1-10, #12 do with a  
graphing calculator