

**Homework Questions?**

Reminder: MSIP Assign. Due on Thurs.  
p.26, #1-9

## 1.5 Cosine Law

Homework Questions?

Cosine Law:

To find a side:  $a^2 = b^2 + c^2 - 2bc \cos A$

*side solving*

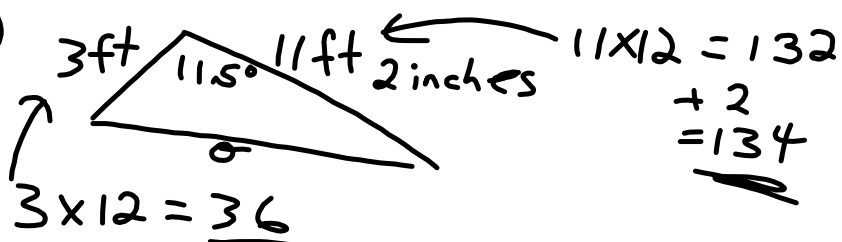
To find an angle:  $\cos A = \frac{b^2 + c^2 - a^2}{2bc}$

p. 38 #1

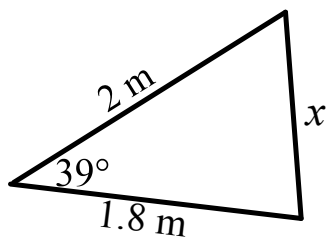
p. 38 #1 a

$$z^2 = 18^2 + 11^2 - 2(18)(11)\cos 32$$

1c)

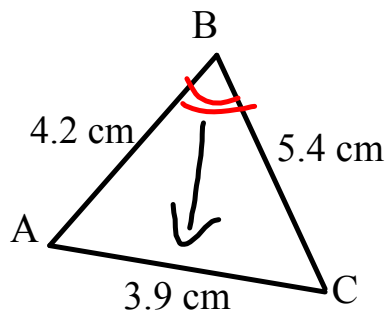


$$\theta^2 = 36^2 + 134^2 - 2(36)(134)\cos 115$$

Find A Side

$$a^2 = b^2 + c^2 - 2bc \cos A$$
$$x^2 = 2^2 + 1.8^2 - 2(2)(1.8) \cos 39$$
$$x^2 = 1.6$$
$$x = \sqrt{1.6}$$
$$x = 1.3 \text{ m}$$

b) Find angle B



$$\cos B = \frac{a^2 + c^2 - b^2}{2ac}$$

$$\cos B = \frac{4.2^2 + 5.4^2 - 3.9^2}{2(4.2)(5.4)}$$

$$\cos B = \frac{31.59}{45.36}$$

$$\cos B = 0.6964$$

$$B = \cos^{-1}(0.6964)$$

$$B = 46^\circ$$

p.38, #5, 7a

Homework: Complete whatever you are not finished:

- ①  
\* p. 38 #1ac, 2ac, 4ac, 5, 7a, 8b
- ② MSIP p. 26 #1-9  
Due Thurs.
- HAND  
IN  
END OF CLASS